

Innovation in Parent & Educator Supports Critical to Kindergarten Readiness

May 17, 2022



Moderator



Carly Roberts

Associate Program Director, Out-of-School Learning
Overdeck Family Foundation
LinkedIn: @overdeck-family-foundation

Presenters



Keo Chea-Young, Ed.D.
Assistant Vice President
of Academic Research and Design
Springboard Collaborative
@springboardNTL



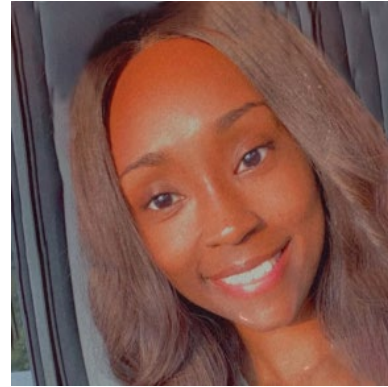
Sarah Anderson
Program Director
Springboard Collaborative
@springboardNTL

Presenters



Jim Lund

Senior Vice President of Program Success
Waterford Upstart
@WaterfordOrg



Tiera Lindsey

Program Coach
Waterford Upstart
@WaterfordOrg

Presenters



Liz Petit
Product Manager
LENA
@lenaearytalk
@LizPettitLENA

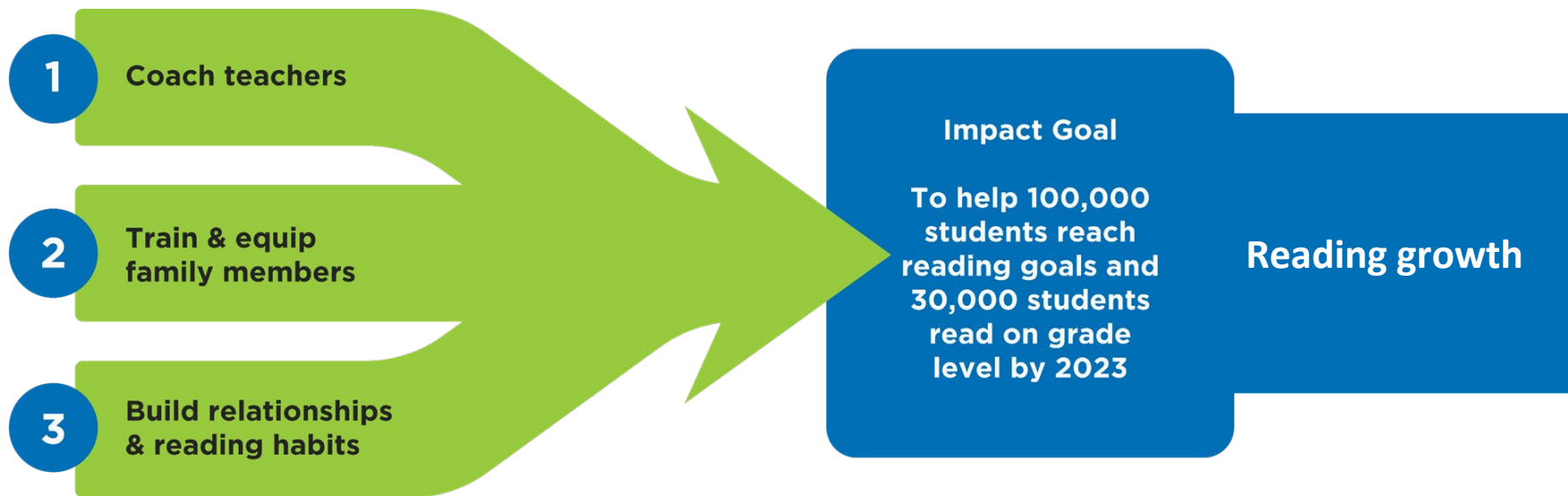


Crystal Skeeter-Davis
LENA Grow Program
Coordinator
Child Development Resources
@566TOTS



Jamie Morris
Infant and Toddler Specialist
Child Development Resources
@566TOTS

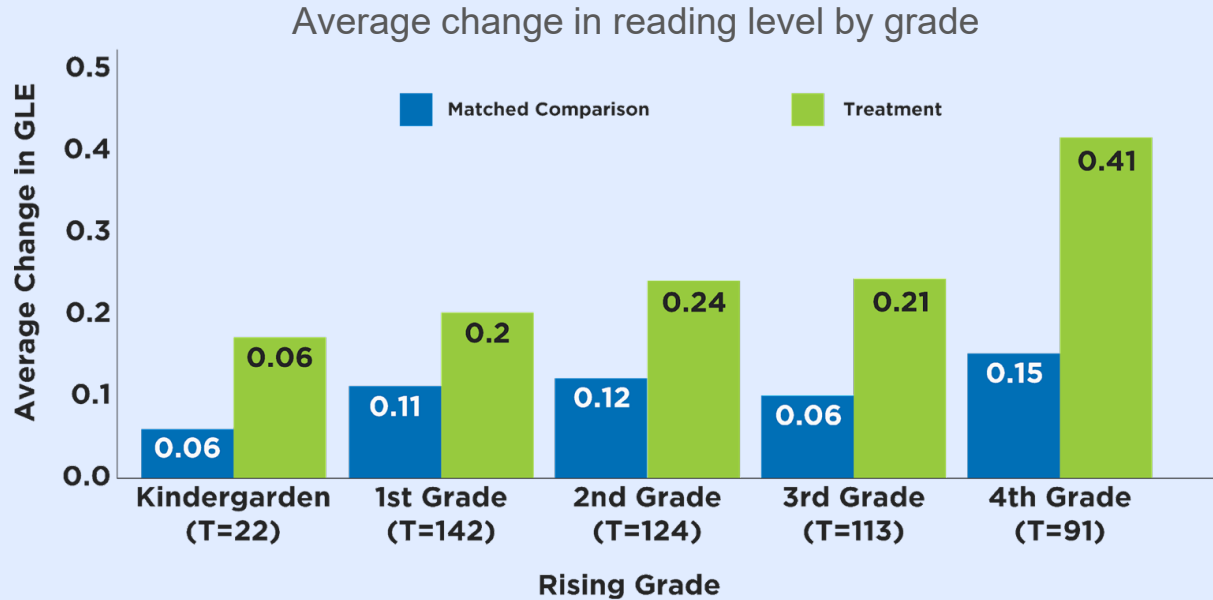
Capacity building is at our core



What is a Learning Accelerator?



Flagship results



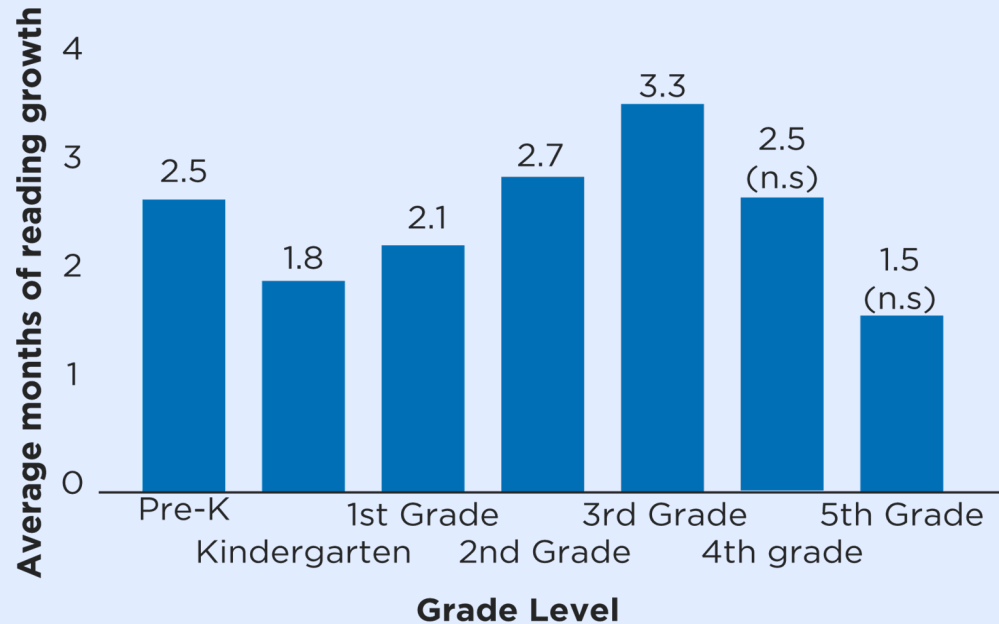
Summer 2021 impact data

Students who participated in the Flagship Summer program showed **3.1 months** of reading growth

Students who participated in the SLA summer program showed **2.3 months** of reading growth



SLA results



Waterford.org partners with families, districts, educators, and communities to help every child build the skills they need to succeed in school and in life.

Our mission is achieved and supported by our three pillars: **Equity and Access**, **Family Empowerment**, and **Universal Literacy**.



Waterford Upstart Journey

Recruiting and Enrolling

- Online
- Over the phone
- In our communities

Equipping for Success

- Laptop and internet
- Activity workbook
- Adaptive software

Implementing and Training

- Onsite and online parent orientation
- Assessment of core skills
- Welcome call

Coaching and Celebrating

- Reading, math, and science
- Social emotional skills
- Family events





- Waterford.org serves over 27 States

- Waterford Upstart participants outperform nearly 80% of non-users

- 99% of parents felt Waterford Upstart helped prepare their child for kindergarten

- The significant gains achieved last through 4th grade

LENA[®]

National nonprofit

Our mission is to transform children's futures through early talk technology and data-driven programs.

LENA
GROW™

16,500+ children served in 2,250+ classrooms across 28 states

LENA
START[®]

7,500+ families served across 25 states plus Canada

LENA
HOME™

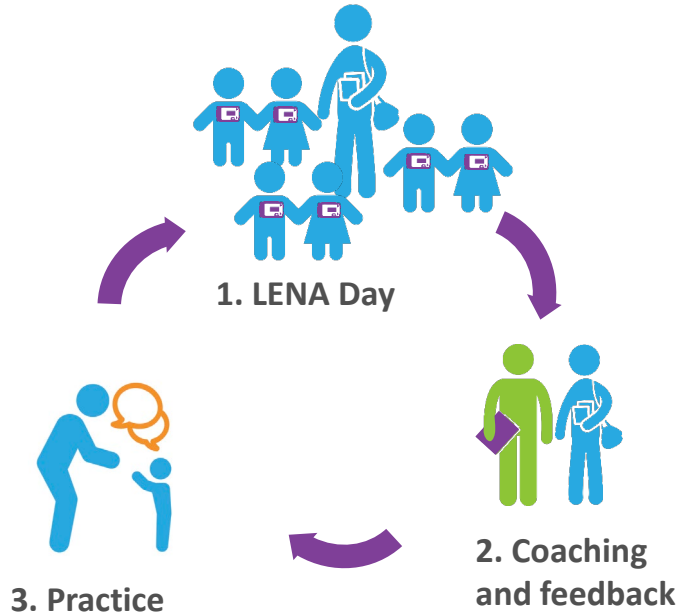
5,500+ families served in 19 states and 4 countries

LENA
SP™

400+ research partners in over 40 countries

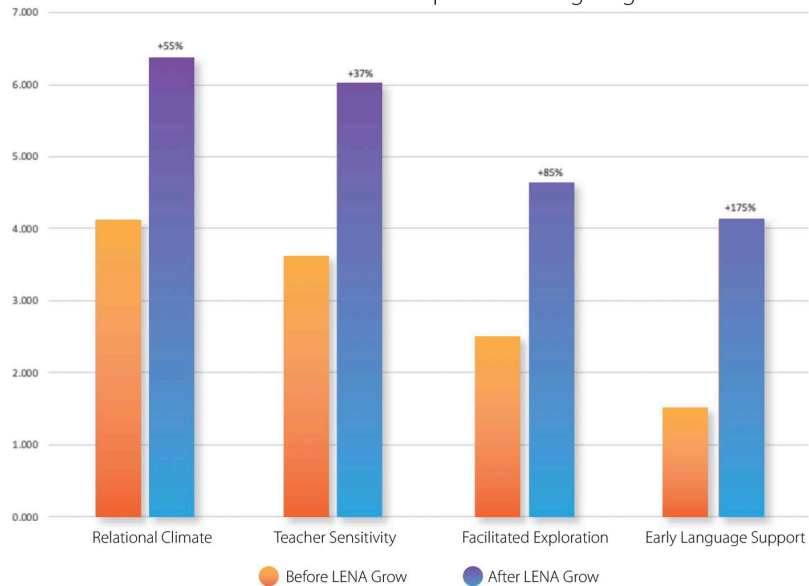
LENA GROW™

How it works

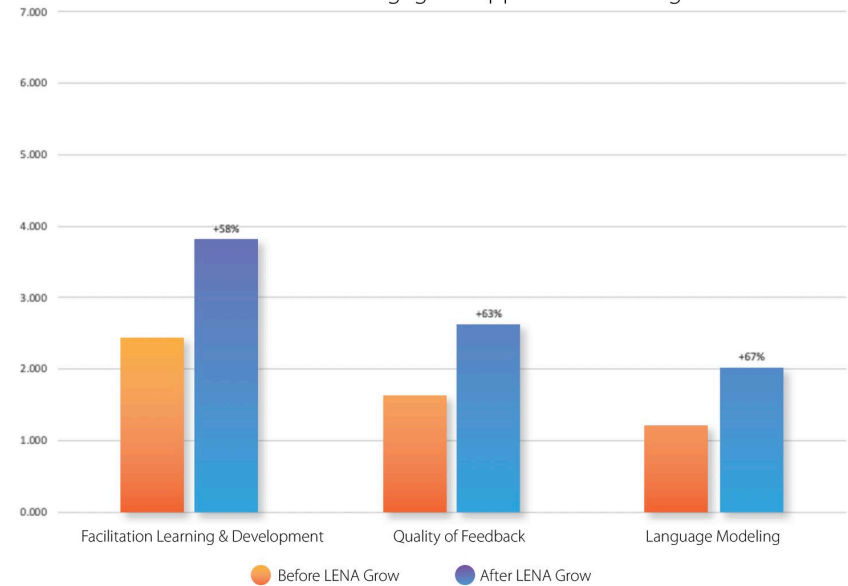


LENA CLASS Score Impact

Age group: Infant
CLASS® Domain: Responsive Caregiving

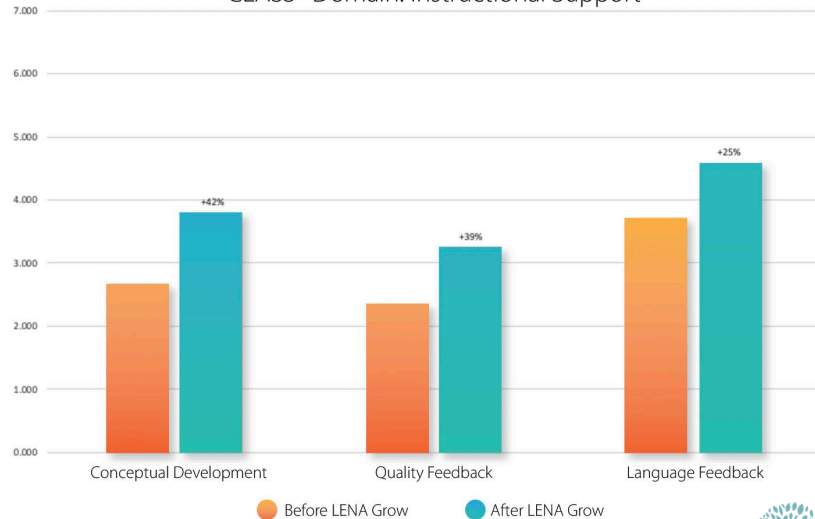


Age group: Toddler
CLASS® Domain: Engaged Support for Learning

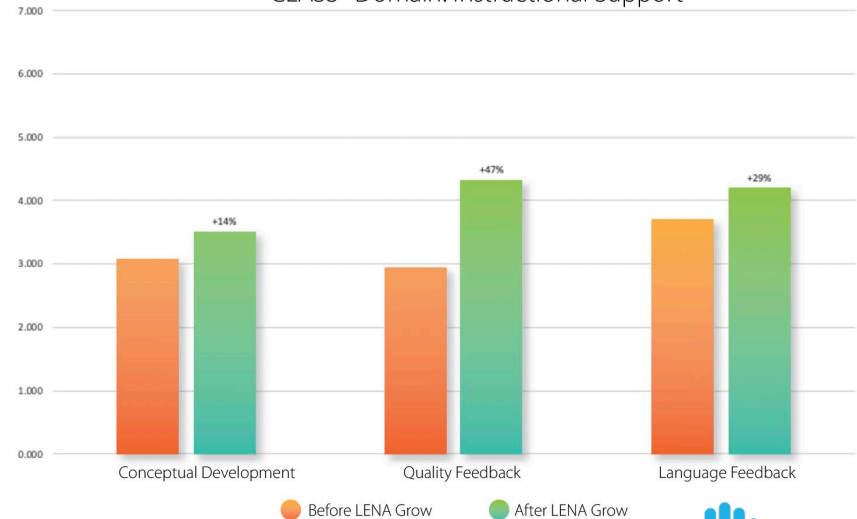


LENA CLASS Score Impact

Age group: Pre-K
CLASS® Domain: Instructional Support



Age group: Pre-K
CLASS® Domain: Instructional Support





55 YEARS AND GROWING

CDR

CHILD
DEVELOPMENT
RESOURCES

Our Purpose

Child Development Resources, Inc. (CDR) is a public charity that strives to inspire and empower children, families, and early childhood professionals to reach their full potential, whatever their challenges

CDR serves children who:

- have disabilities or delays in their development
- have risk factors such as premature birth, teen parents, parental substance abuse or very low family income
- need high-quality child care and development services

Each year throughout Virginia's Historic Triangle, Child Development Resources (CDR) serves more than 1,400 children with disabilities, developmental delays, or those who are at risk for delay, trains early care professionals, and leads Virginia's Infant & Toddler Specialist Network

VIRGINIA
INFANT & TODDLER SPECIALIST
NETWORK

“Achieving Excellence in Early Care”

www.va-itsnetwork.org

The Virginia Infant & Toddler Specialist Network strives to increase the knowledge level and skills of those who care for infants and toddlers, whether in family day homes or in child care centers



The Virginia Infant & Toddler Specialist Network is a program of Child Development Resources, www.cdr.org, and is supported by the Virginia Department of Education, Grant #93.575, with funds made available to Virginia from the U.S. Department of Health and Human Services.



Innovations



10 →
5 weeks



New
Teacher
Report





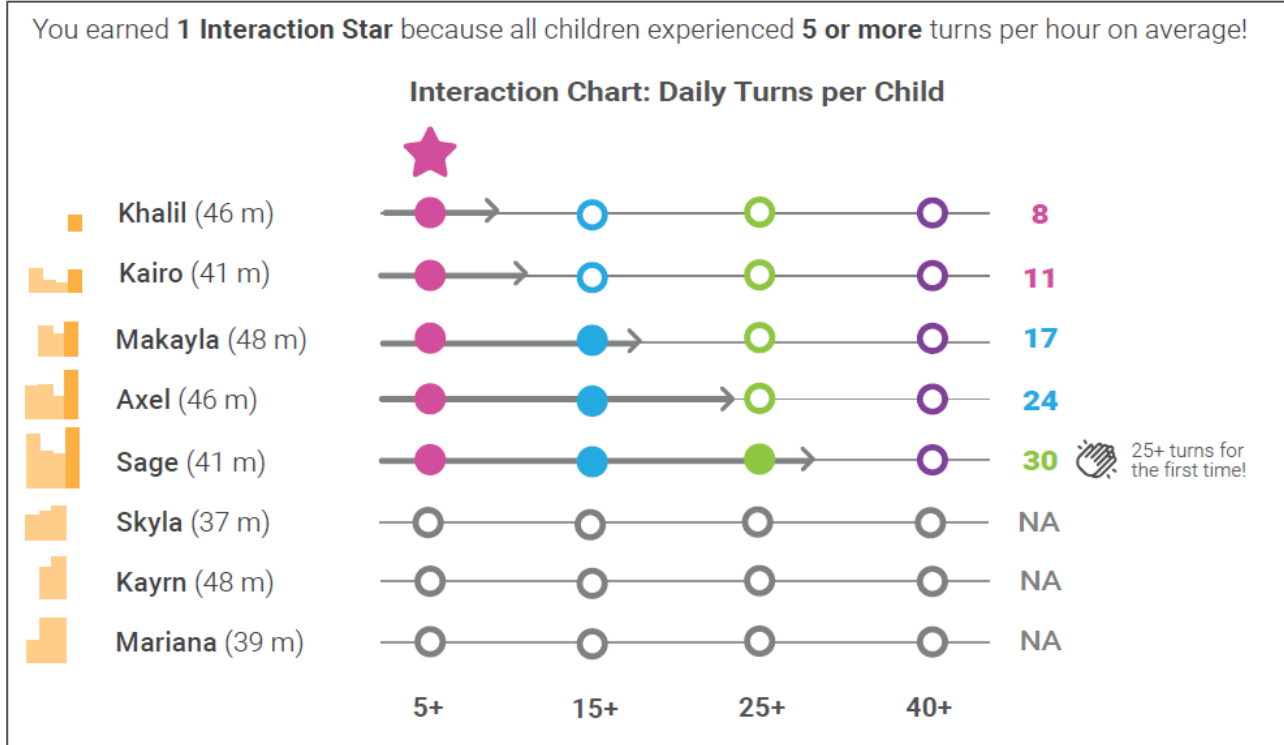
Program Impact at 5 Weeks

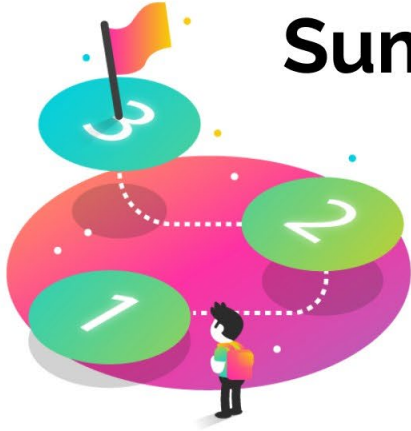
Priority: Maintain Equitable Outcomes

Children in	5 week Turns gains	8* week Turns gains	<i>children retain...</i>
lower talk (<15 turns)	+58%	+68%	85% <i>of the impact</i>
bottom 1/3 of their classroom	+43%	+48%	90% <i>of the impact</i>

*8 weeks was planned minimum fidelity for a 10 Week sequence.

Focus on each child's experience





Summer Learning Path (SLP)

A response to summer learning loss and COVID-19

13

S M T W T F S

30	31	1	2	3	4	5
6	7	8	9	10	11	12
13	14	15	16	17	18	19
20	21	22	23	24	25	26
27	28	29	30	1	2	3

June

S M T W T F S

27	28	29	30	1	2	3
4	5	6	7	8	9	10
11	12	13	14	15	16	17
18	19	20	21	22	23	24
25	26	27	28	29	30	31

July

S M T W T F S

1	2	3	4	5	6	7
8	9	10	11	12	13	14
15	16	17	18	19	20	21
22	23	24	25	26	27	28
29	30	31	1	2	3	4

August

SLP Program Innovations



Advertise
and recruit
families
digitally



Piece
together
address
validation,
shipping,
and drive by
checkouts

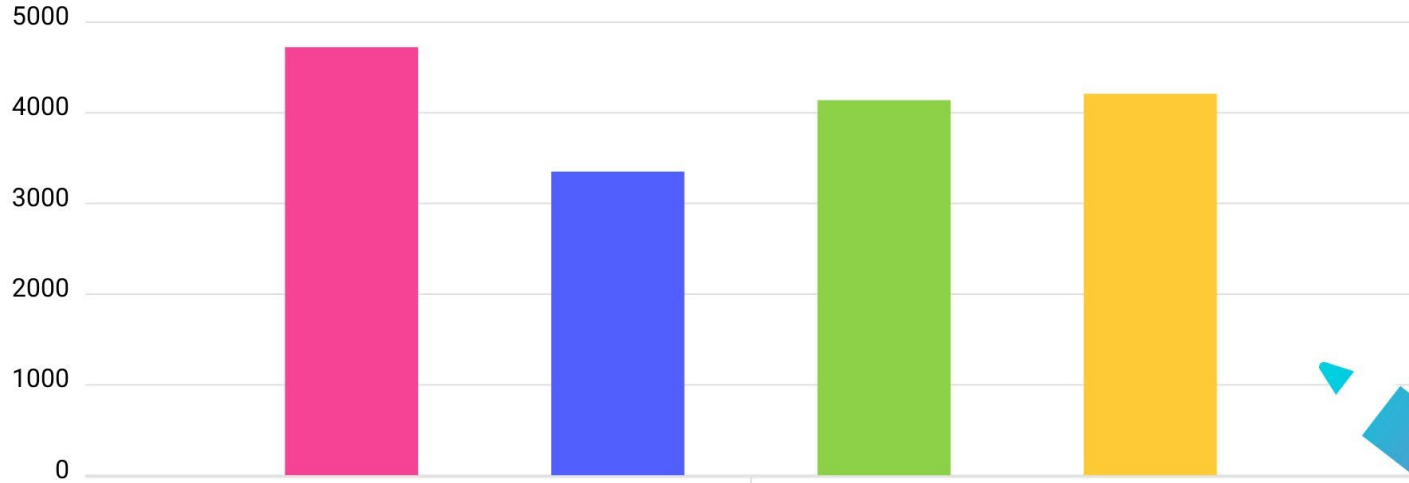


Train,
assess,
coach, and
inspire 20/5
usage
remotely



Celebrate
desired
results in a
compressed
time frame

SLP Numbers



4,725 families participated across 9 states

3,351 families were below 200% of the federal poverty level

4,139 children tested kindergarten beginning or above

4,211 parents felt this helped prepare their child for kindergarten



SLA as an innovation

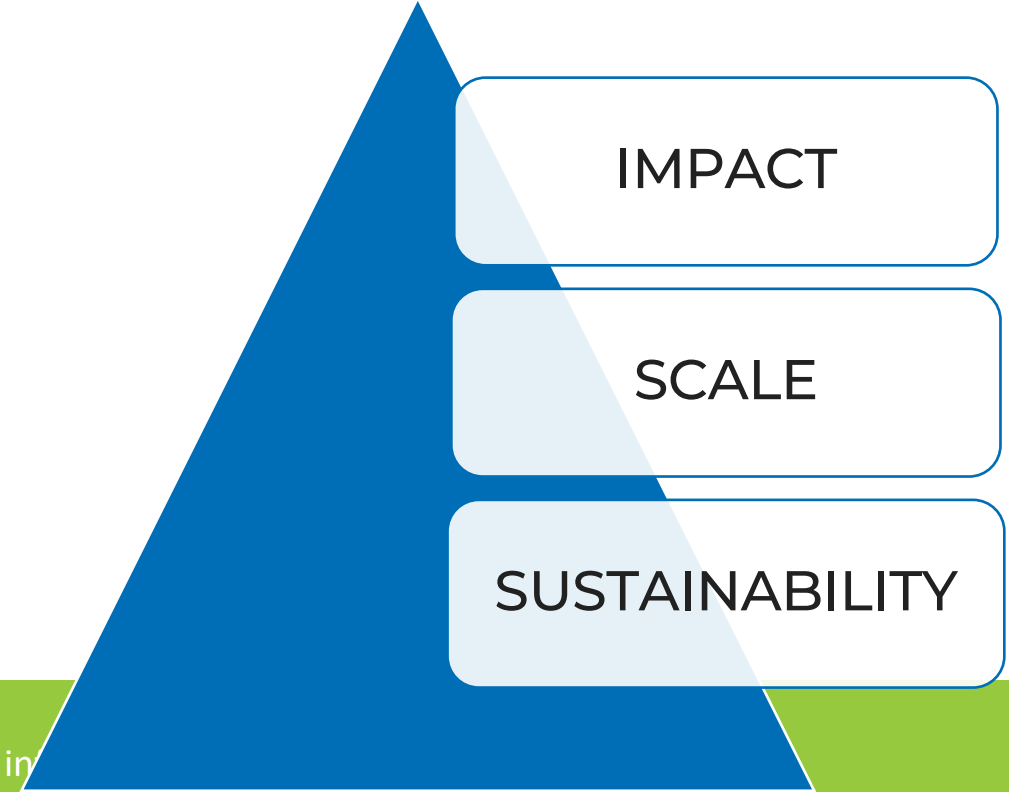
- ❑ COVID-19 has augmented reading needs and increased need/use for virtual opportunities
- ❑ Districts can't get it all done during school day:
Recognize families as a resource; leverage their expertise and experience
- ❑ Further align curricula with the Science of Reading (SoR)
- ❑ Educators feel overwhelmed: *Turnkey curriculum + coaching is desired*



Springboard Learning
Accelerator (SLA)

info@springboardcollaborative.org

Building evidence

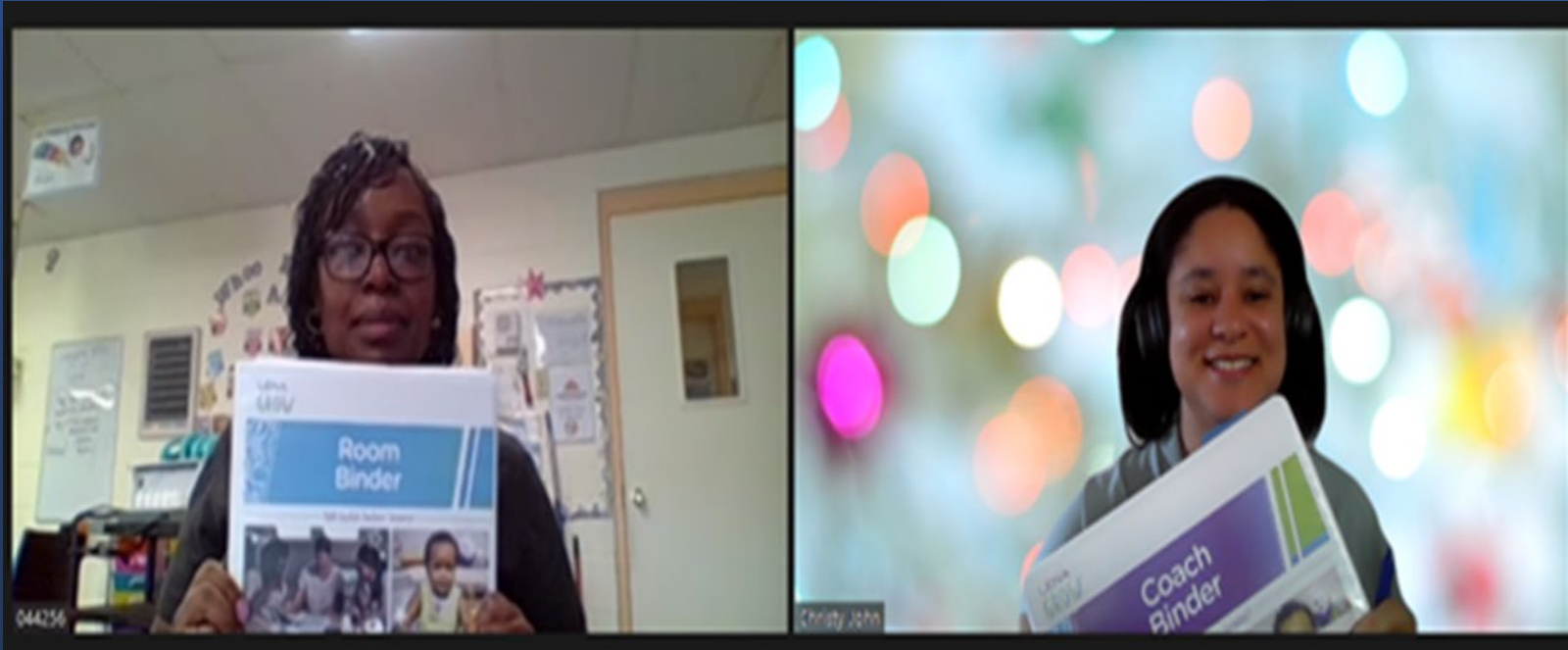


in



Since January 2021:

- 24 Trained LENA Grow coaches
- Served more than 100 children
- Completed 2 of 3 cohorts
- Participated in pilot of LENA Grow3
- Created position dedicated to LENA Grow program services



Virtual coaching session, early childhood educator and VA ITSN Infant & Toddler Specialist/LENA Grow coach

Questions & Discussion

Upcoming GLR Learning Tuesdays Webinars:

LEARNING LOSS RECOVERY CHALLENGE

Elevating Educators: Investing in Teacher Professional Development for Long-term Payoff
Tuesday, May 24, 3–4:30 p.m. ET/12–1:30 p.m. PT

LEARNING LOSS RECOVERY CHALLENGE

Prioritizing Early Relational Health in Tutoring for Equitable Learning Recovery
Tuesday, May 31, 3–4:30 p.m. ET/12–1:30 p.m. PT

LEARNING LOSS RECOVERY CHALLENGE

TBD

Tuesday, June 7, 3–4:30 p.m. ET/12–1:30 p.m. PT

CRUCIBLE OF PRACTICE SALON

Inspiring Learning in Everyday Places

Tuesday, June 14, 12:30–2 p.m. ET/9:30–11 a.m. PT

Please Join Us!

gradelevelreading.net @readingby3rd #GLReading #LearningTuesdays #GLRKeepers

