

First 10 School-Community Partnerships in Action

September 27, 2022



Peer Exchange
LEARNING CONVERSATIONS



gradelevelreading.net @readingby3rd #GLReading #LearningTuesdays

Moderator



David Jacobson, Ph.D.
Principal Technical Advisor
Education Development Center

Presenters



Andrea Berry, Ed.D.
Superintendent
School District of the City of
York, Pennsylvania



Barbara Cooper, Ph.D.
Secretary
Alabama Department of Early
Childhood Education



Alyssa Gleason
Director, East Providence
Health Equity Zone
East Bay Community Action
Program, Rhode Island



Karen Rebello
Prekindergarten Principal
East Providence Public
Schools, Rhode Island



EDC

Education
Development
Center

FIRST 10 SCHOOLS AND COMMUNITIES

David Jacobson



Early Childhood @ EDC

With a commitment to addressing disparities and ensuring equity, EDC promotes the overall health, development, and early learning of children—from before birth throughout childhood. Our work informs the field, supports families and caregivers, builds the capacity of organizations and people, and advances effective policy.

1958

Commitment from the beginning (Hands-On Science, 1960; Head Start, 1978)

GLOBAL REACH

50 U.S. states, Asia, Africa, and Latin America



>50 Projects



Influential Partners:
PBS, Sesame Workshop, Apple, Google, New America

>80 Staff

Funders: HRSA, OHS, OCC, USAID, NSF, NIH, DoEd, SAMHSA, UNICEF, Heising-Simons Foundation, Wallace Foundation, LEGO Foundation, Bill & Melinda Gates Foundation, Overdeck Family Foundation



First 10: Three Big Ideas



Research supports a community-wide approach to the first 10 years.



Innovative communities are creating a First 10 plan that addresses learning and learning partnerships with families and comprehensive services.



First 10 provides

- a framework
- a guided planning process
- a set of effective collaborative strategies drawn from research



THE FUNDAMENTAL CHALLENGE OF POVERTY

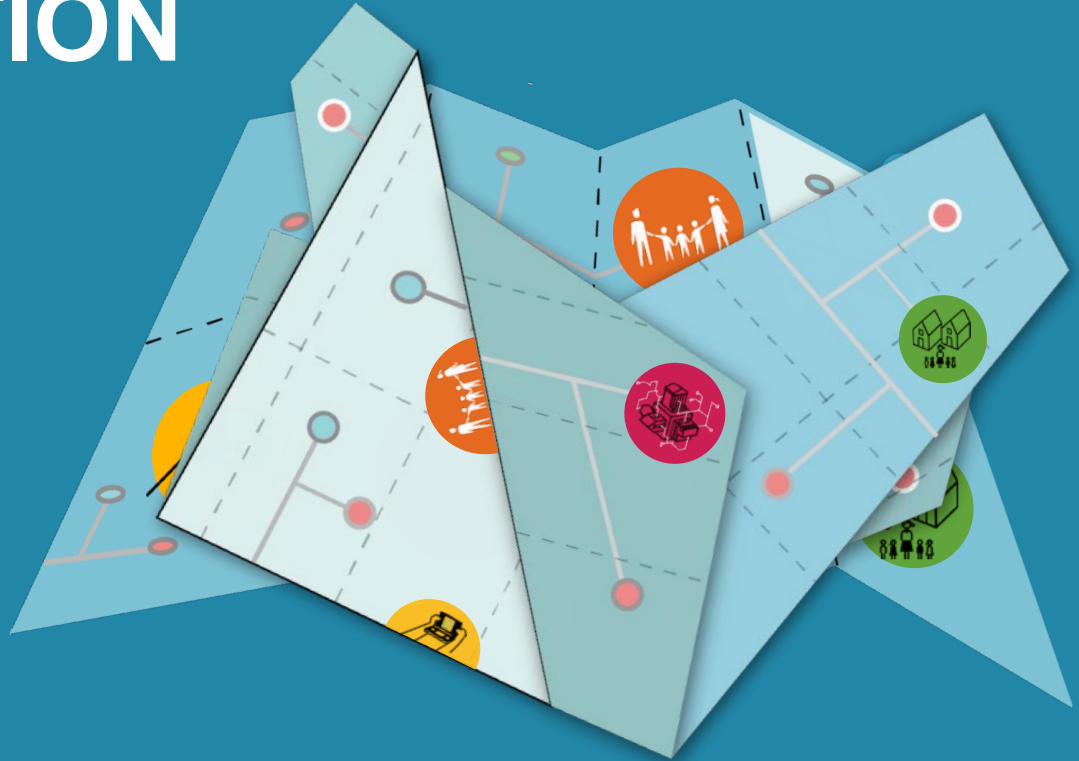


45% of U.S. children under 6
live in low-income families

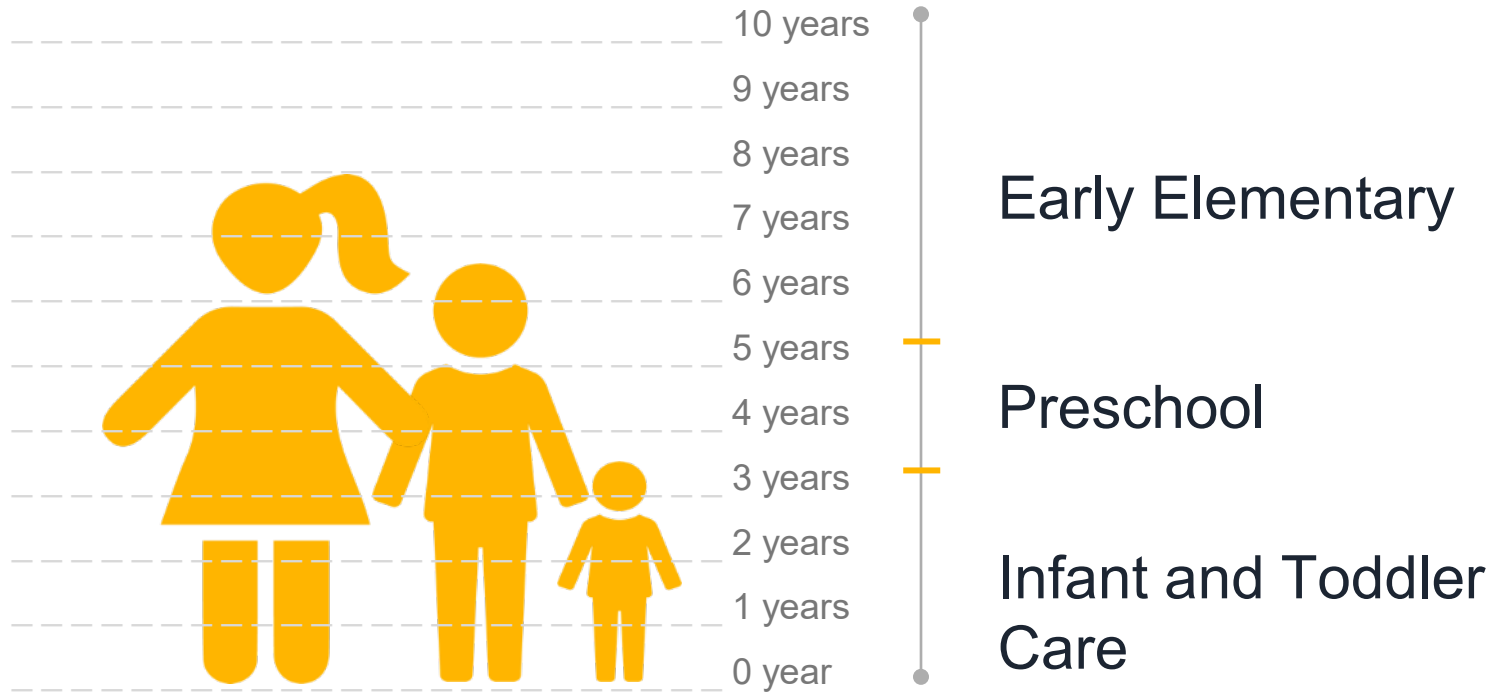
The full achievement gap is
present when children enter
kindergarten

Barrier to Improvement: FRAGMENTATION

- 0-5 / K-12
- Education / Health
Social Services
- Public / Private



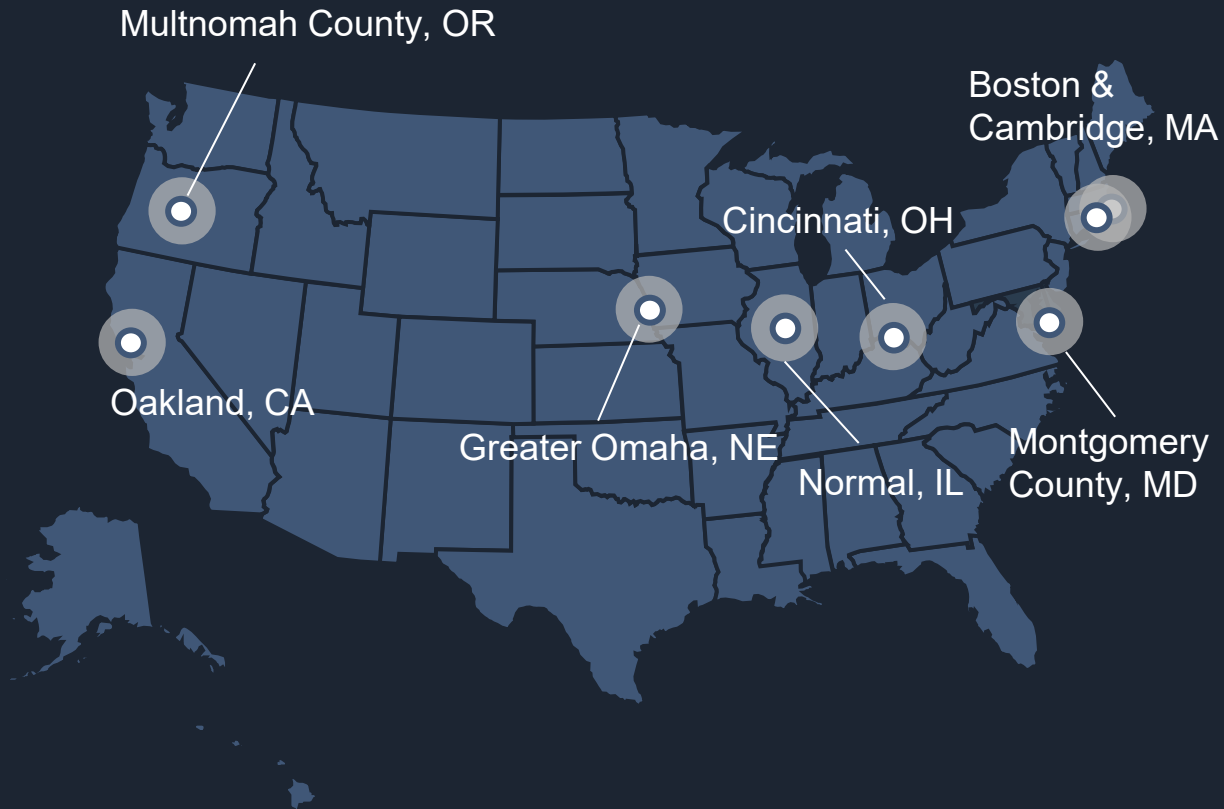
The Early Childhood—Elementary School Continuum



Community Schools and Comprehensive Services



Leading Edge Communities



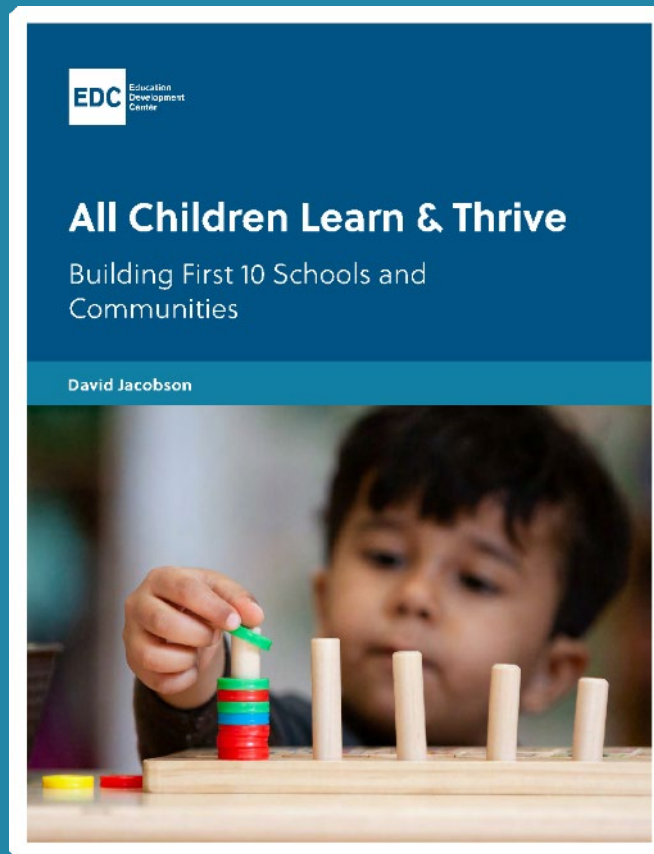


ALL CHILDREN LEARN AND THRIVE

Building First 10 Schools and Communities

Funder: Heising-Simons Foundation

First10.org





First 10 is Growing

- Maine: State and local First 10 teams
- Pennsylvania: Community, county, and regional initiatives
- Rhode Island: Transition to Kindergarten leading to First 10 communities
- Alabama: State and Local First 10 and Transition to Kindergarten initiative
- Michigan: First 10 pilot project in several urban and rural communities
- Kellogg Foundation grant: First 10 Network

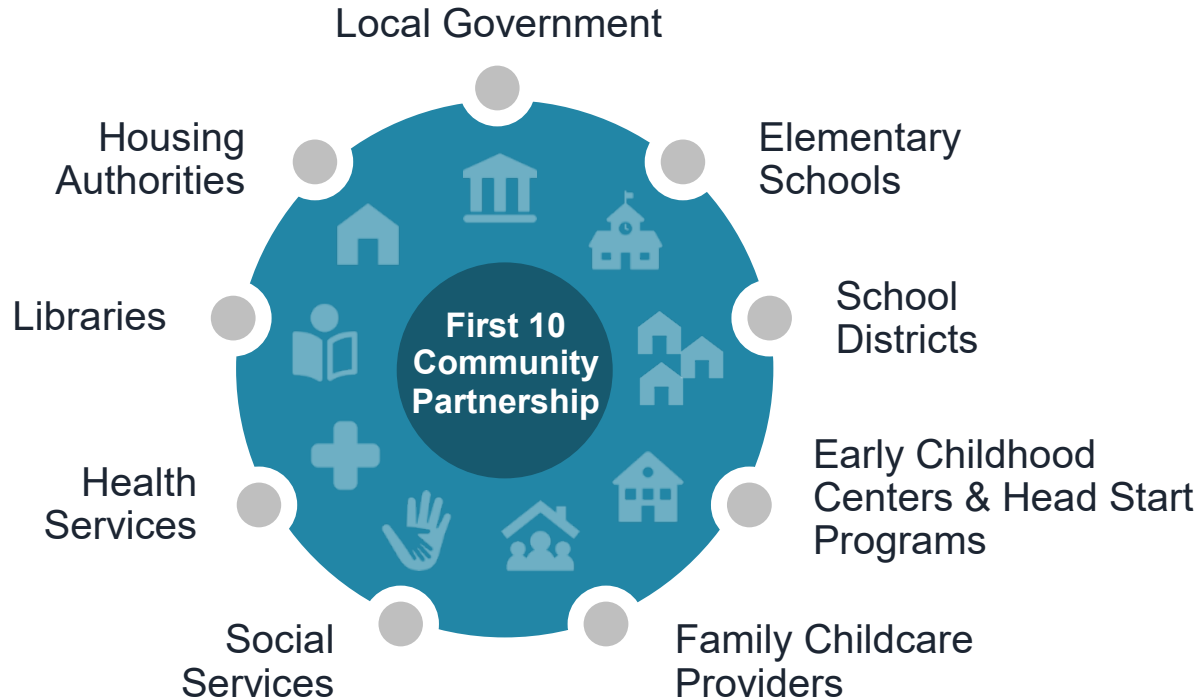
Educational and Racial Equity and the Whole Child



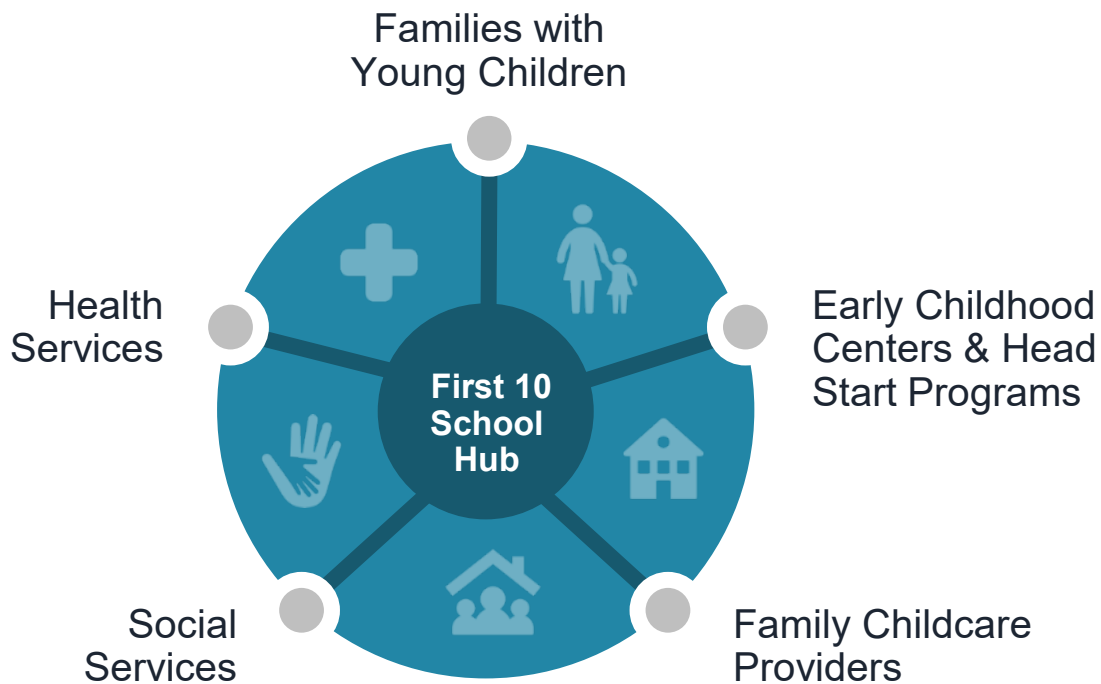
Mutually-Reinforcing Collaboration



First 10 Community Partnership

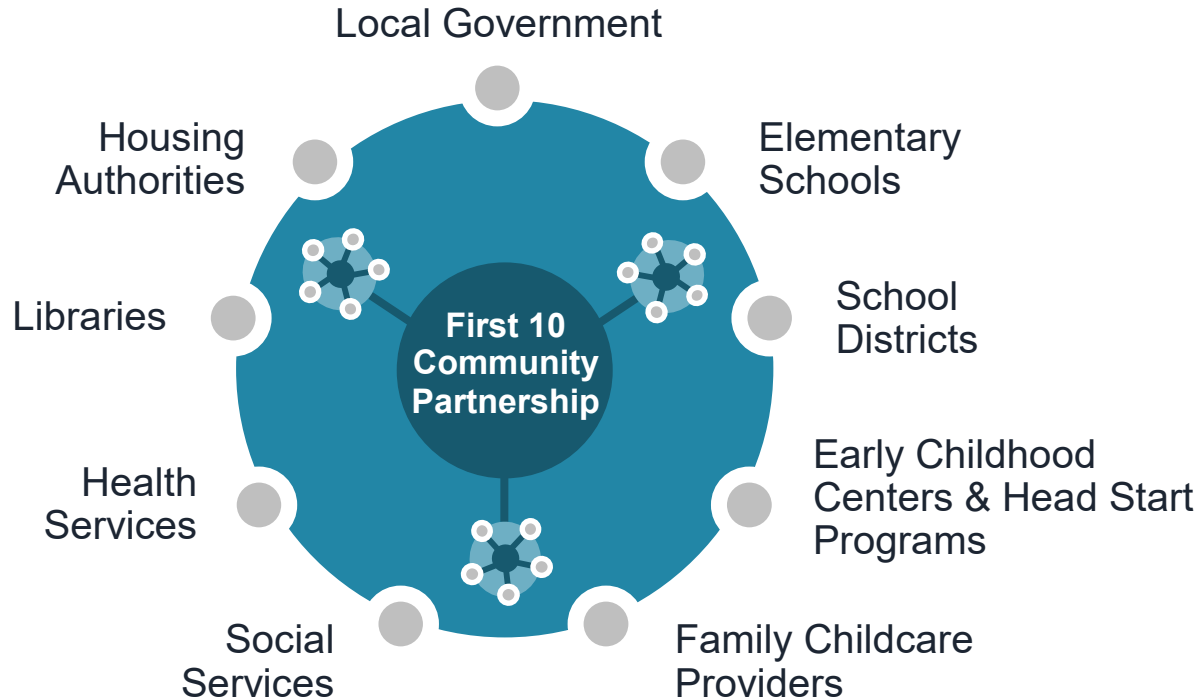


First 10 Community School Hub





First 10 Community Partnership with Hubs





Effective Schools





Transition Connections and Process

Four Types of Connections

School-Child

School-Family

Program-School

School-Community







MULTI-PURPOSE R



Effective Schools



School-Connected Play and Learn Groups

- Caregivers and children
 - Including family childcare providers
- Developmentally-appropriate activities
- Trusting relationships
- Caregiver learning
- Implemented as a series
- Three key connections
 - Peers
 - Health and social services
 - Schools

York City Virtual Play and Learn





Effective Schools





The Basics

- Five fun, simple, and powerful ways that every family can **give every child a strong start.**
- Encompass most of what experts say is important for development from birth to age three.
- Find a 4-minute video on each Basic at [TheBasics.org](https://www.TheBasics.org)



**Maximize Love,
Manage Stress**



Talk, Sing, and Point



**Count, Group, and
Compare**



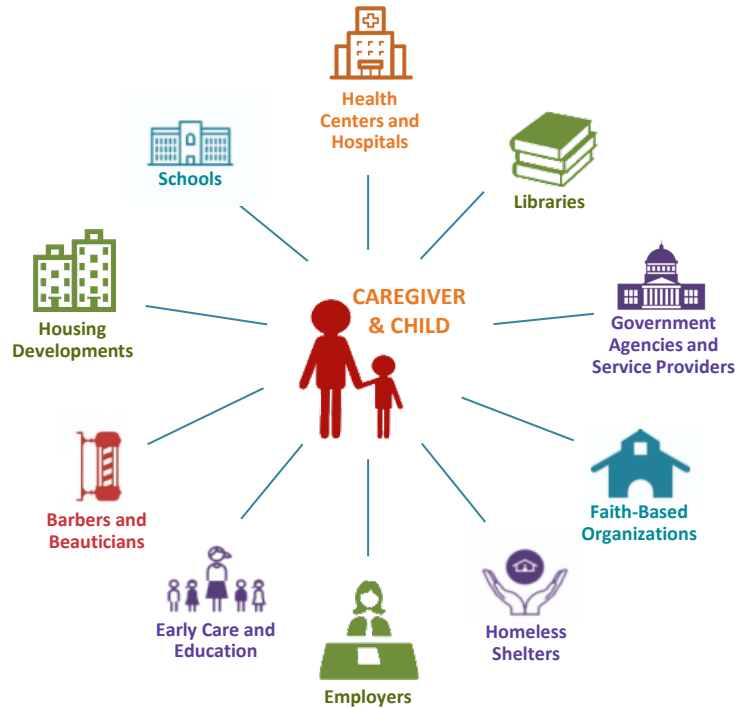
**Explore through
Movement and Play**



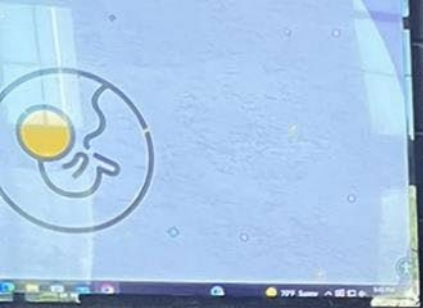
**Read and Discuss
Stories**



Socioecological Saturation









Effective Schools



Provide Strategic Leadership and Ongoing Assessment

- Effective use of strategic plans and plan management
- Monthly plan management meetings
- Senior leadership and steering committee meetings
- Use of implementation benchmarks to monitor progress and make adjustments



First 10: Three Big Ideas





FUN. SIMPLE. POWERFUL.

The Basics
TheBasics.org

- Maximize Love, Manage Stress
- Talk, Sing, and Play
- Count, Group, and Compare
- Explore Through Movement and Play
- Read and Discuss Stories

90% of Brain Growth Occurs in the First 3 Years

Play and Learn Series for Infants and Toddlers

Join our early childhood educators for a free 6-week play and learn series to meet other families with young children and explore fun ways you can support your child's growth and development.

This program series is geared for children ages 0 to 2 years (older siblings are welcome) and their caregivers, grandparents, child care providers, nannies, etc. Each session, participants will receive a free children's book, supplies, and resources for learning at home.

Where: Menessey Elementary School, in the library
75 Fort St. East Providence, RI 02919
(transportation support is available upon request)
When: Weekly on Tuesday, 10:00 AM
March 1, 2022 - April 5, 2022 (6 sessions)

Space is limited, so register: www.first10.org or call 401-267-2001

For questions contact Amy Griffin: 401-267-2001 or ag@first10.org

Partners: First 10, RIDE, and others.



HEAD START Program

NOW ENROLLING

EBCAP.ORG

401-267-2001



The First 10 Theory of Action

Effective Schools





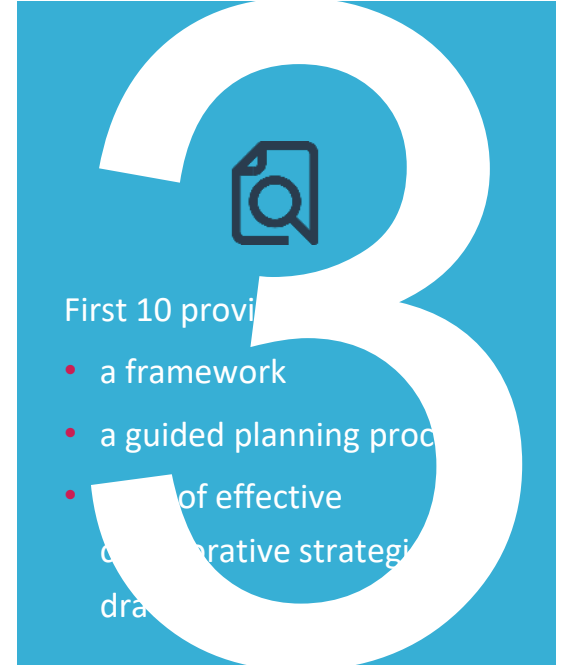
First 10: Three Big Ideas



Research supports a community-wide approach to the first 10 years.



Innovative communities are creating a First 10 plan that addresses learning and learning partnerships with families and comprehensive services.



First 10 provides:

- a framework
- a guided planning process
- a set of effective collaborative strategies drawn from research

Questions & Discussion



Upcoming GLR Learning Tuesdays Webinars:

LEARNING LOSS RECOVERY CHALLENGE

Learning From the Bright Spots: Examining Student Achievement Data During COVID-19
Tuesday, September 27, 3:00 - 4:30 p.m. ET/12:00 - 1:30 p.m. PT

FUNDER-TO-FUNDER WORKSHOP

Discovering Pathways to Astonishing Success in Connectivity
Co-sponsored by The Patterson Foundation
Tuesday, October 4, 12:30 - 1:30 p.m. ET/9:00 – 11:00 a.m. PT

LEARNING LOSS RECOVERY CHALLENGE

Getting Results With REACH: A Model for Successful Learning Loss Recovery
Co-sponsored by Foundations, Inc.
Tuesday, October 4, 3:00 - 4:30 p.m. ET/12:00 - 1:30 p.m. PT

CRUCIBLE OF PRACTICE SALON

Bringing Dolly Parton's Imagination Library to Every County
Tuesday, October 11, 12:30 - 2:00 p.m. ET/9:00 – 11:00 a.m. PT

LEARNING LOSS RECOVERY CHALLENGE

Engage Every Student: Building Community Connections to Expand OST Access
Tuesday, October 11, 3:00 - 4:30 p.m. ET/12:00 – 1:30 a.m. PT

gradelevelreading.net @readingby3rd #GLReading #LearningTuesdays

We hope you can join us!

