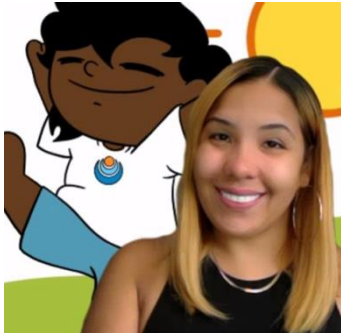


GLR Learning Tuesdays | Learning Loss Recovery Challenge Series
The First Month of School and Beyond: Nurturing Attendance Every Day

October 17, 2023 | 3:00 pm – 4:30 pm ET

PANELIST and MODERATOR BIOS



Panelist

Lysandra Agosto, MBA

Director of Compliance and ERSEA

Early Childhood Division

Children's Aid, New York, NY

Twitter: [@ChildrensAidNYC](https://twitter.com/ChildrensAidNYC)

Facebook: [ChildrensAidNYC](https://www.facebook.com/ChildrensAidNYC)

LinkedIn: [ChildrensAidNYC](https://www.linkedin.com/company/ChildrensAidNYC) & [Lysandra Agosto](https://www.linkedin.com/in/LysandraAgosto)

Lysandra Agosto is the Director of Compliance and ERSEA with the Children's Aid Early Childhood Division. She has been working in the field of serving children and families for over a decade. She holds a master's degree in business administration.

Lysandra is a life-long learner and a data enthusiast. She is passionate about serving vulnerable children and families succeed and thrive into their fullest potential. She believes 'to do better, you need to know better and sometimes you just don't know, so you need someone to teach you; to teach you in a non-judgmental, compassionate, and patient way'. Lysandra was born and raised in the Bronx in New York in the late 80s's by her Puerto Rican grandmother along with her older sibling. Her experiences impacted her desire to work with vulnerable families and children. Her goal is to break generational cycles of poverty, strengthen and stabilize families, and change the status-quo of folks who grow up in communities and households similar to hers.



Panelist

Benjamin Barlow

Director of Attendance Supports

Albuquerque Public Schools, Albuquerque, New Mexico

Twitter: [@ABQschools](https://twitter.com/ABQschools)

Facebook: [ABQschools](https://www.facebook.com/ABQschools)

LinkedIn: [Albuquerque Public Schools](https://www.linkedin.com/company/AlbuquerquePublicSchools)

As the Director of Attendance Supports at Albuquerque Public Schools, Ben Barlow leads a team that supports over 140 schools across Albuquerque, New Mexico in their efforts to partner with families in support of stronger attendance. The Albuquerque Public Schools Attendance Support Unit provides coaching and technical assistance to schools to improve student attendance, to build school attendance plans, and to implement the tiered approach to attendance.



Panelist

Anel Garza

Principal, Woodbury Elementary
Marshalltown Community School District, Marshalltown, IA

Twitter: [@mcsdbobcats](https://twitter.com/mcsdbobcats)

Facebook: [Marshalltown Schools](https://www.facebook.com/MarshalltownSchools)

LinkedIn: [Marshalltown Community School District](https://www.linkedin.com/company/marshalltown-community-school-district)

Anel Garza is an elementary school administrator in a dual language school in Marshalltown, Iowa. Along with being bilingual (English and Spanish), her ten years of experience have allowed her to make connections with school families and the community. Prior to being an administrator, she taught for ten years as an ELL, second grade, and kindergarten teacher. She is also Certified in Collaborative Problem Solving® (CPS) approach by Think:Kids, a program based in the Department of Psychiatry at Massachusetts General Hospital (MGH) in Boston, MA – www.thinkkids.org. From the start of her educational career, she strongly believes school attendance is extremely important, especially after growing up missing weeks of school year after year due to family trips to Mexico during the winter months. With the connections she makes with families and her CPS approach training, she helps families understand and support their children with attendance.



Panelist

Sandra Romero

Community School Director
Whitney Young Jr. Campus
Children's Aid, New York, NY

Twitter: [@ChildrensAidNYC](https://twitter.com/ChildrensAidNYC)

Facebook: [ChildrensAidNYC](https://www.facebook.com/ChildrensAidNYC)

LinkedIn: [ChildrensAidNYC](https://www.linkedin.com/company/childrens-aid-ny)

Sandra Romero is the Community School Director at the Whitney Young Jr Campus for Children's Aid. Sandra has held two other roles over her seven-year tenure at the Whitney Young Jr Campus. As the Assistant Community School Director, Sandra was responsible for the Attendance Improvement initiative and Mental Health Services on the campus. She previously was the Student Resource Coordinator, where she implemented Boston College's City Connects student support model in The Bilingual School (CS 211). Sandra works diligently to improve the services and supports to the children and families at the Whitney Young Jr Campus. She credits much of the success of the implementation of the Community School strategy at the Whitney Young Jr Campus to the development of strategic partnerships, strong systems and effective coaching of full time and part time staff. Sandra has been at Children's Aid for 19 years and started in our Summer Youth Employment Program. While working at Children's Aid, Sandra obtained her bachelor's and master's Degree.



Panelist

Monica Rossi, MSW

Early Childhood Division Health Coordinator

Children's Aid, New York, NY

Twitter: [@ChildrensAidNYC](https://twitter.com/ChildrensAidNYC)

Facebook: [ChildrensAidNYC](https://www.facebook.com/ChildrensAidNYC)

LinkedIn: [ChildrensAidNYC](https://www.linkedin.com/company/ChildrensAidNYC)

Monica Rossi serves as the primary point of contact for all data management systems and provides support to staff in fully implementing the COPA health information procedures. In addition, she reviews health records for children, particularly to ensure that treatment and follow-up occur as needed. Visiting each of 9 sites once a month allows her to work with family advocates, directors and other staff to review documents, monitor on-site procedures, provide trainings, and support overall implementation of the Early Childhood health program.



Panelist

Brandis Stockman

Program Manager, Education & Expanded Learning

National League of Cities

Twitter: [@leagueofcities](https://twitter.com/leagueofcities)

Facebook: [National League of Cities](https://www.facebook.com/NationalLeagueofCities)

LinkedIn: [National League of Cities](https://www.linkedin.com/company/NationalLeagueofCities)

Brandis Stockman is a Program Manager for Education and Expanded Learning with the National League of Cities and has 25 years of experience supporting youth and families. Brandis is currently leading NLC's work in the area of student reengagement, focusing on gathering and disseminating information about strategies to reengage middle and high school youth who became disengaged from school during the course of the pandemic. Brandis is a National Afterschool Matters Fellow, an Editorial Review Board member for the Afterschool Matters journal, a published author, and past Chair of the Salt Lake Afterschool Regional Network. Brandis has been recognized as a top presenter for the National Afterschool Association and has spoken at numerous national conferences about student reengagement.



Moderator

Hedy Chang

Executive Director and President
Attendance Works

Twitter: [@AttendanceWorks](#)

Facebook: [Attendance Works](#)

LinkedIn: [Attendance Works](#)

Hedy Nai-Lin Chang is the founder and Executive Director of Attendance Works, a national and state level initiative aimed at advancing student success by addressing chronic absence. A skilled presenter, facilitator, researcher and writer, she co-authored the seminal report, Present, Engaged and Accounted For: The Critical Importance of Addressing Chronic Absence in the Early Grades, as well as numerous other articles about student attendance. Deeply committed to promoting two-generation solutions to achieving a more just and equitable society, Hedy has spent more than three decades working in the fields of family support, family economic success, education and child development. She served as a senior program officer at the Evelyn and Walter Haas Jr. Fund and as co-director of California Tomorrow, a nonprofit committed to drawing strength from cultural, linguistic and racial diversity. In February 2013, Hedy was named by the White House as a Champion of Change for her commitment to furthering African American Education.