

# Kindergarten as a “Sturdy Bridge”: Place Based Investments

June 20, 2023



# Presenters



Jonathan Hui  
Senior Program Officer  
The Kresge Foundation



Barbara Reisman  
Senior Advisor  
Maher Charitable  
Foundation



Karla Ruiz, MPA  
Senior Program Officer  
Sobrato Philanthropies



Jymil Thompson, Ed. L.D.  
Director of Programs  
John and Janice Wyatt  
Foundation

# Moderator



Vivian Tseng, Ph.D.  
President & CEO  
Foundation for Child Development

# We envision a California with strong systems, asset-based policy, and a sustained field of stakeholders championing DLLs and ELs

## Our vision of success

---

### Systems

School systems that support high-quality, language-rich learning environments for all California students

### Policy

DLLs and ELs move from the margins to the center in education policy and advocacy

### Field

Field is set up for further investment and advocacy on behalf of DLLs and ELs

# To get there, we support state policy advocacy and regional implementation, and building field support

## Our approaches

<b>Investment in SEAL</b>
Demonstrating what successful systems change looks like in schools across the state

<b>Statewide policy impact</b>
Building collective advocacy capacity to advance DLL/EL-centered policy

<b>Regional opportunities</b>
Fostering place-based DLL/EL policy implementation and innovation

<b>Policy ecosystem</b>
Amplifying investments by cultivating field-level support for DLLs/ELs

# How do we know we're making progress along the way?

## We measure five intermediate outcomes

---

Aligned **networks** of EL-focused advocates

Sustained EL-centered **policy agendas and advocacy**

**Activated systems of stakeholders and mobilized communities**, including families, students, and educators

EL-focused **knowledge generation and dissemination** at the intersection of policy and practice

Strengthened **enabling conditions for centering ELs** in policy and systems change, including shifts toward an asset-based narrative and greater public investments in the education of ELs




# Geographic Service Areas

# Our Approach



- *Collective Impact*
- *Increase access and quality of early childhood and out of school time programs (public/private sector)*





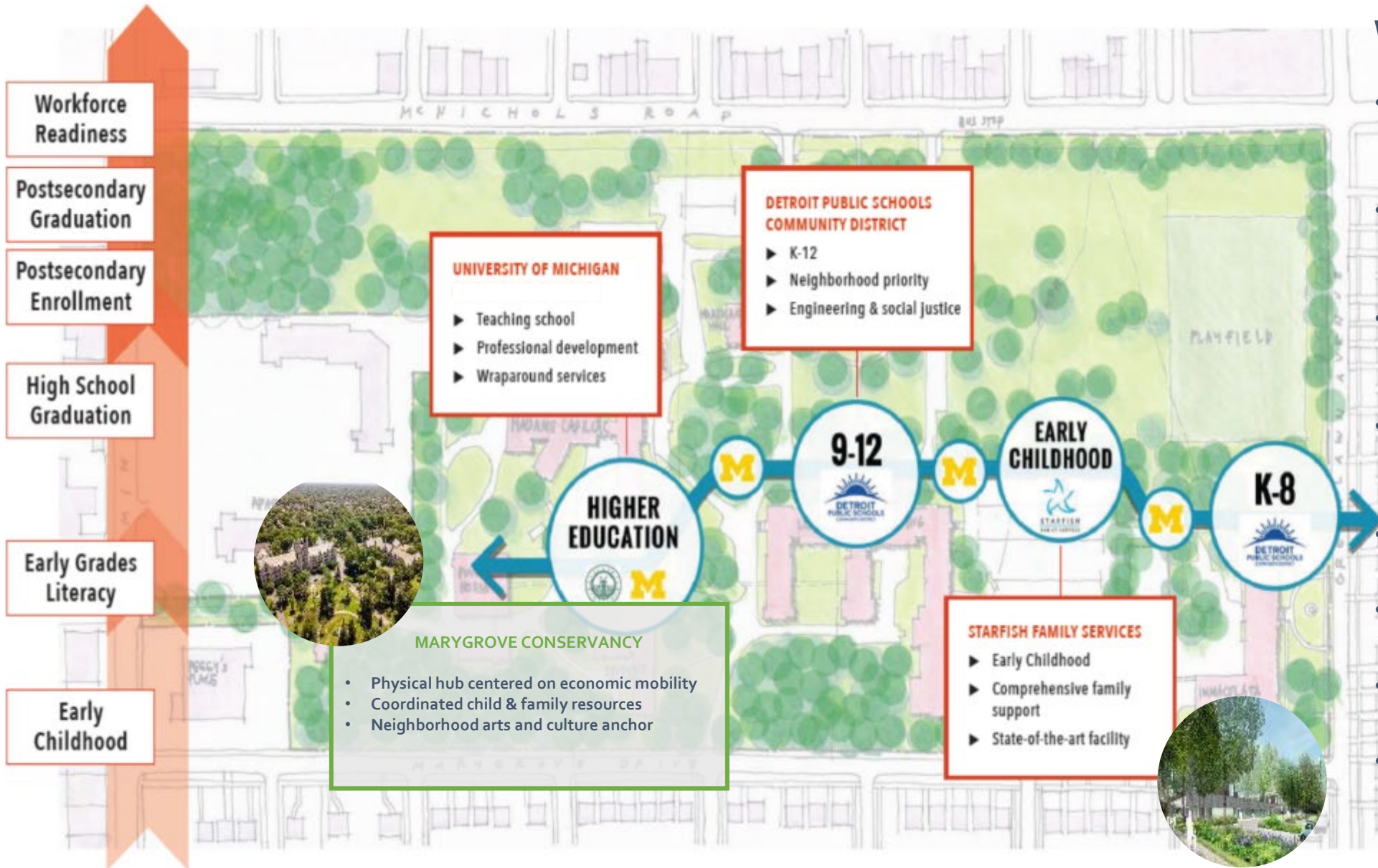
**53 acres in the heart of northwest Detroit**

**Home of the former  
Marygrove College**

**Opportunity to rescue campus from foreclosure,  
support the College's transition, and catalyze  
the neighborhood's revitalization.**

**Model for a cradle-to-career continuum nested  
within a neighborhood to provide educational  
opportunity for existing residents.**





## What if students could...

- Receive consistent instruction and curriculum from Pre-K to university
- Attend a high-quality K-12 school in partnership with a major university
- Receive wraparound services throughout their academic careers
- Ensure their families are also supported through a multi-generational approach
- Utilize public spaces after school hours
- Have access to affordable housing in the neighborhood
- Participate in entrepreneur training at local businesses
- Learn to be a civic leader by working with neighborhood leaders



# The Marygrove Early Education Center





**The Marygrove Early Education Center demonstrates national best practices of exemplary physical facilities for young children and the adults that serve them.**

**Nature-Based, Play-Focused Outdoor Learning**



# Key Practices for Kindergarten Readiness



## Student & Family Experience

- One-stop physical & behavioral health
- Single, cross-campus coordinator
- Family events with both ECE and K families



## Professional Development

- Joint PD between ECE and K-3 teachers
- Moving toward a single curriculum throughout ages 0-8



## Data & Evaluation

- Data-sharing between ECE and K to inform instructional planning



## Enrollment & Retention

- Automatic admission into the elementary program for ECE graduates
- Students move from ECE to K as single cohorts





Univ. of Michigan +  
DPSCD Partnership

Neighborhood  
Resource Hub

Reimagined  
Streetscapes &  
Micromobility

Higher Education  
Anchors

Hub for Black Artists  
& Entrepreneurs

State-of-the-Art Early  
Education Center

Child-Centered  
Outdoor Play Spaces

Cradle-to-Career  
Educational Programs  
- Design Thinking and  
Social Justice

Inclusive Affordable  
Housing Strategy

Food Entrepreneur  
Incubator

Prenatal to Adult  
Physical & Mental  
Health

Banking & Economic  
Mobility Resources

Incubator for  
Youth Nonprofits



# Knowing your Community

- *Data gathering*
  - *Surveys*
  - *Anecdotal*
  - *Listening*
  - *Report*
- *Community Dynamics*
  - *Business*
  - *Education*
  - *Community*
- *COVID 19 (OST PROVIDERS)*
  - *Building Foundational Trust*



# Knowing your Community Cont.

- *Alignment*
  - *Program/System Development*





# Questions & Discussion

# Upcoming GLR Learning Tuesdays Webinars:

## GLR LEARNING TUESDAYS: PARTNER WEBINAR

Strengthening Kindergarten to Improve Children's PreK-3rd Grade Experiences

Co-sponsored with New America

Tuesday, June 20, 3:00-4:30 p.m. ET/12-1:30 p.m. PT

## FUNDER-TO-FUNDER CONVERSATION

What It Means to Drive Systems Change in Digital Access

Co-sponsored with The Patterson Foundation

Tuesday, June 27, 12:30-1:45 p.m. ET/9:30-10:45 a.m. PT

## GLR LEARNING TUESDAYS: LEARNING LOSS RECOVERY CHALLENGE WEBINAR

Technology-Assisted Teaching and Learning: Continuing the Conversation

Tuesday, June 27, 3:00-4:30 p.m. ET/12-1:30 p.m. PT

Please Join Us

[gradelevelreading.net](https://gradelevelreading.net) @readingby3rd #GLReading #LearningTuesdays #GLRKeepers

  
**GLR WEEK 2023**  
BRIGHT SPOTS AND SILVER LININGS  
**SAVE THE DATE**  
JULY 17-21

THE CAMPAIGN FOR  
GRADE-LEVEL  
READING

